

Linger Longer

By The Sea



Rated 'Best Cottage Colony' 14 Years in a Row by Cape Cod Life.

On Cape Cod Bay



Part rustic, part romantic, part idyllic

261 Linnell Road • Brewster, MA 02631

Resv: (508) 896-7714

www.lingerlongerbythesea.com

info@lingerlongerbythesea.com



“Who hasn't fantasized about living on the beach at some point in their life? Now it's your turn.”

About Linger Longer By The Sea

Our ocean view vacation rentals are an ideal choice because they are affordable, roomy and located directly on a [private beach](#) on idyllic Cape Cod Bay.

Our 10 beach cottages and 6 waterfront lodging accommodations offer a terrific deal for family vacations, girlfriend getaways, golfing trips and friends traveling together.

Key features

- 6 oceanfront apartments, 10 beachfront cottages - most updated.
- Location, location, location—Private beach on scenic Cape Cod Bay
- Incredible Value. Choice of bed & bath size & rate. Daily/Weekly. WiFi - A/C - Decks
- Family operated for over 50 years!

Life on the beach part rustic, part romantic, part idyllic – all Cape Cod perfect!

Apartments

Amenities All units: fully-equipped kitchen • dining table • updated private bathroom(s) • linens • telephone • deck or patio • outdoor furniture • heat • charcoal grill • cable TV • free use of cribs and high chairs Many units also include: WiFi • outdoor shower • laundry facilities • air conditioning (508) 896-7714

Apartment 1

2 Bedrooms - 1 Bath Max: 5



Season	Daily	Weekly
Low	\$205	N/A
Shoulder	\$315	Fr \$1805
High	N/A	Fr \$2870

1 King • 2 Twins

Apartment 2

Studio Bedroom - 1 Bath Max: 3



Season	Daily	Weekly
Low	\$180	N/A
Shoulder	\$255	Fr \$1405
High	N/A	Fr \$2240

1 King or 2 Twins

Apartment 3

2 Bedrooms - 1 Bath Max: 5



Season	Daily	Weekly
Low	\$225	N/A
Shoulder	\$335	Fr \$1875
High	N/A	Fr \$2940

1 King • 2 Twins

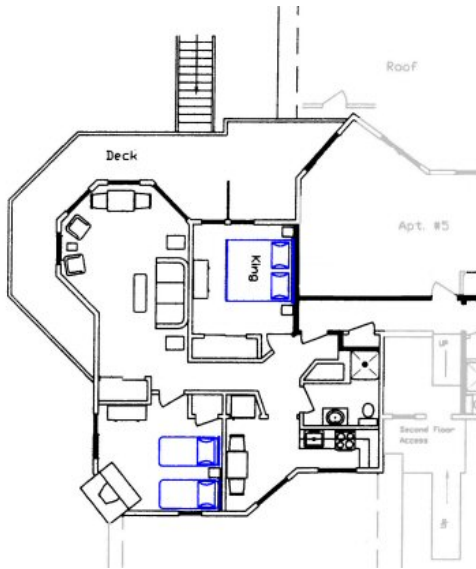
2017 Low Season: April 1– May 25 & Oct 9–Dec 1; Shoulder Season: May 26–Jun 24 & Sep 3–Oct 8; High Season: Jun 25– Sep 2

Apartments

Amenities All units: fully-equipped kitchen • dining table • updated private bathroom(s) • linens • telephone • deck or patio • outdoor furniture • heat • charcoal grill • cable TV • free use of cribs and high chairs Many units also include: WiFi • outdoor shower • laundry facilities • air conditioning **(508) 896-7714**

Apartment 4

2 Bedrooms - 1 Bath Max: 5



Season	Daily	Weekly
Low	\$225	N/A
Shoulder	\$335	Fr \$1875
High	N/A	Fr \$2940

1 King • 2 Twins

Apartment 5

Studio Bedroom - 1 Bath Max: 2



Season	Daily	Weekly
Low	\$180	N/A
Shoulder	\$255	Fr \$1405
High	N/A	Fr \$2240

1 King or 2 Twins

Apartment 6

1 Bedroom - 1 Bath Max: 3



Season	Daily	Weekly
Low	\$200	N/A
Shoulder	\$275	Fr \$1650
High	N/A	Fr \$2415

1 King or 2 Twins

Cottages

Amenities All units: fully-equipped kitchen • dining table • updated private bathroom(s) • linens • telephone • deck or patio • outdoor furniture • heat • charcoal grill • cable TV • free use of cribs and high chairs Many units also include: WiFi • outdoor shower • laundry facilities • air conditioning (508) 896-7714

The Dunes Cottage 2 Bedrooms - 1 Bath Max: 5



Updated kitchen & bath

Season	Daily	Weekly
Low	\$215	N/A
Shoulder	\$340	Fr \$1880
High	N/A	Fr \$3045

1 King • 2 Twins

Crow's Nest Cottage 2 Bedrooms - 1 1/2 Baths Max: 5



Gas fireplace

Season	Daily	Weekly
Low	\$275	N/A
Shoulder	\$385	Fr \$2190
High	N/A	Fr \$3465

1 King • 2 Twins

Bay View Cottage 3 Bedrooms - 3 Baths Max: 7



Season	Daily	Weekly
Low	\$365	N/A
Shoulder	\$495	Fr \$2850
High	N/A	Fr \$4760

1 Queen • 4 Twins • ADA Accessible Unit

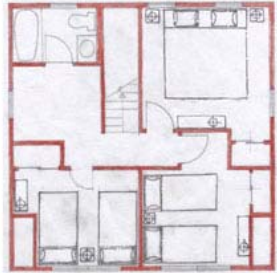
2017 Low Season: April 1– May 25 & Oct 9–Dec 1; Shoulder Season: May 26–Jun 24 & Sep 3–Oct 8; High Season: Jun 25– Sep 2

Cottages

Amenities All units: fully-equipped kitchen • dining table • updated private bathroom(s) • linens • telephone • deck or patio • outdoor furniture • heat • charcoal grill • cable TV • free use of cribs and high chairs Many units also include: WiFi • outdoor shower • laundry facilities • air conditioning (508) 896-7714

Windward Cottage

3 Bedrooms - 2 Baths Max: 7



2nd Floor



Totally reconfigured & updated

1st Floor

Season	Daily	Weekly
Low	\$285	N/A
Shoulder	\$395	Fr \$2345
High	N/A	Fr \$3955

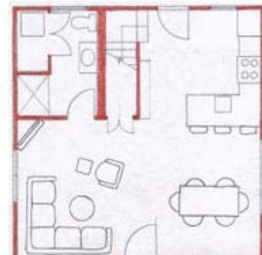
1 King • 4 Twins

Becalmed Cottage

3 Bedrooms - 2 Baths Max: 7



2nd Floor



Totally reconfigured & updated

1st Floor

Season	Daily	Weekly
Low	\$285	N/A
Shoulder	\$395	Fr \$2345
High	N/A	Fr \$3955

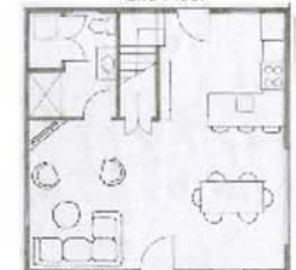
1 King • 4 Twins

Sea Mist Cottage

3 Bedrooms - 2 Baths Max: 7



2nd Floor



Totally reconfigured & updated

1st Floor

Season	Daily	Weekly
Low	\$285	N/A
Shoulder	\$395	Fr \$2345
High	N/A	Fr \$3955

1 King • 4 Twins

Cottages

Amenities All units: fully-equipped kitchen • dining table • updated private bathroom(s) • linens • telephone • deck or patio • outdoor furniture • heat • charcoal grill • cable TV • free use of cribs and high chairs Many units also include: WiFi • outdoor shower • laundry facilities • air conditioning (508) 896-7714

Leeward Cottage 3 Bedrooms - 2 Baths Max: 7



2nd Floor



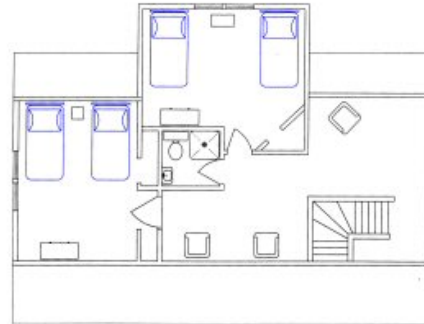
Totally reconfigured & updated

1st Floor

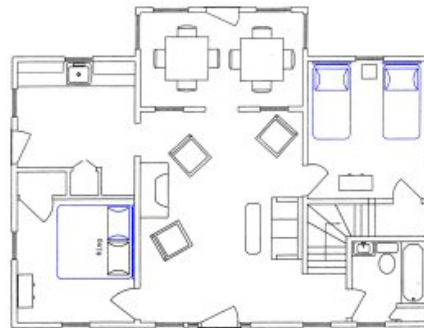
Season	Daily	Weekly
Low	\$285	N/A
Shoulder	\$395	Fr \$2345
High	N/A	Fr \$3955

1 King • 4 Twins

Hawk's Nest Cottage 4 Bedrooms - 2 Baths Max: 8



2nd Floor



1st Floor

Gas fireplace

Season	Daily	Weekly
Low	\$255	N/A
Shoulder	\$260	Fr \$1345
High	N/A	Fr \$2100

1 King • 6 Twins

The Roost Cottage 1 Bedroom - 1 Bath Max: 3



Updated kitchen & bath
Gas fireplace

Season	Daily	Weekly
Low	\$200	N/A
Shoulder	\$210	Fr \$1055
High	N/A	Fr \$1680

King or Twins

2017 Low Season: April 1– May 25 & Oct 9–Dec 1; Shoulder Season: May 26–Jun 24 & Sep 3–Oct 8; High Season: Jun 25– Sep 2

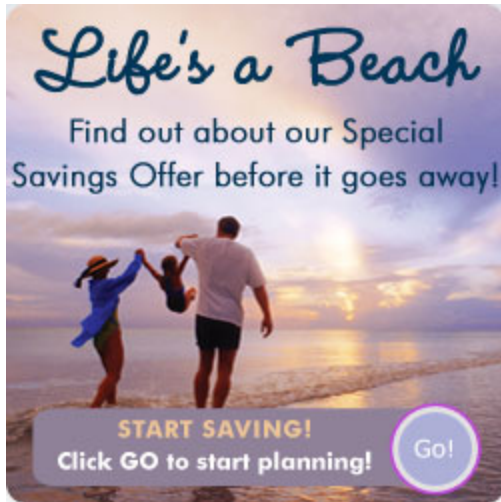
Cottages

Amenities All units: fully-equipped kitchen • dining table • updated private bathroom(s) • air conditioning • linens • telephone • deck or patio • outdoor furniture • heat • charcoal grill • cable TV • free use of cribs and high chairs Many units also include: WiFi • outdoor shower • laundry facilities (508) 896-7714

Quail Run Cottage No Longer Available

131 Linnell Landing 3 Bedrooms - 1 1/2 Baths Max: 7

Property Map



Spring & Fall Special 2 Nights from \$360

Add up to 2 More Nights Free

- Book 2 weekend nights, get 1 more night free.
- Book 2 or 3 midweek nights, get 2 more midweek nights free.
- Stay April 1 - June 4 or between September 24 - December 1
- Inquire above for complete Offer Terms, Conditions & holiday black-out dates. Or call **508-896-7714**



outdoor shower

Season	Daily	Weekly
Low	\$200	N/A
Shoulder	\$300	Fr \$1675
High	N/A	Fr \$3185

1 King, 1 Queen, 2 Twins



About Brewster

Scenic • Historic • Quiet • Convenient



Nestled at Cape Cod's mid-point, Brewster is home to Nickerson State Park and a large section of the [Cape Cod Rail Trail](#). It's ideal for exploring the outer Cape. Brewster is a relaxing, family-friendly destination with its own [general store](#), quaint architecture, friendly people, and very special beaches.



Waterfront Apartment

FAQs

How close are the units to the water?

All apartments are right on the beach, facing the water. Seven of our cottages are less than 60 yards from the beach, with some actually on the beach. Three of our cottages are less than 1/2 mile from the beach. Check out our [property map](#).

What is the climate on Cape Cod?

Summer usually provides warm days, ranging between 70 and 80 degrees, and cool nights. Spring can often be cool with temperatures ranging in the 40s and 50s. Autumn is spectacular with highs in the 60s.

Is there WiFi on the property?

Wireless internet is accessible from all apartments and most cottages. For those staying in units with weak or no signal, access is available in the common porch area of the apartment building.

Do we have to bring our own sheets and towels?

No. All sheets and towels are provided with the exception of beach towels. Some units have laundry facilities. There is a common coin operated washer/dryer.

Smoking is not allowed in any building.

(508) 896-7714

Directions

Call (508) 896-7714

- From the Sagamore Bridge take Route 6 East to exit 12.
- Take a left at the end of the ramp onto Route 6A.
- Take Route 6A for approximately 2 1/4 miles.
- Go past Nickerson State Park on the left; Linnell Landing Road will be on your right soon after passing the park.
- Turn right onto Linnell Landing Road. Linger Longer is at the end of the road on the left.

[Click here](#) for a local map



“This is my favorite place to stay on the Cape.”



Beach Cottage